

**SOUTHERN INNOVATION AND BACKWARD KNOWLEDGE SPILLOVERS:  
A DYNAMIC FDI MODEL<sup>1</sup>**

**BY YIN HE AND KEITH E. MASKUS<sup>2</sup>**

April, 2009

**Abstract**

We develop a model in which the proportion of Northern firms choosing to become multinationals is endogenous. In the benchmark model, Northern firms engage in innovation based on the local knowledge stock and learning-by-doing (LBD), and a share of these products is transferred to Southern production via FDI. An increase in Southern imitation limits the multinationalization rate. We extend the model to permit Southern innovation based on the amount of local knowledge and LBD. Because Southern firms have higher innovation costs, this generates inefficient specialization in both regions and reduces global growth. However, it generates a U-shaped relationship between FDI and local imitation. We also allow for “backward” spillovers in knowledge to Northern innovation, which partially restores global efficiency and growth. We find that Southern R&D investments follow an inverse U-shape as imitation risk rises. A fall in fixed FDI setup costs or a rise in the LBD spillover in either region raises innovation growth.

**Key Words:** Innovation; learning-by-doing; patents; multinational investment; growth

**JEL classification codes:** F12; F23; O31; O34

---

<sup>1</sup> We thank Wolfgang Keller, Murat Iyigun, Martin Boileau, Robert McNown, Raymond Riezman, Alan Deardorff and participants of Midwest International Economics Fall 2008 conference and those of the international trade brownbag at the Department of Economics at the University of Colorado at Boulder.

<sup>2</sup> Yin He is a visiting scholar and Keith E. Maskus is Professor of Economics, both at the University of Colorado, Boulder. Corresponding author: Keith E. Maskus, Department of Economics, UCB 256, University of Colorado, Boulder CO 80309-0256, [maskus@colorado.edu](mailto:maskus@colorado.edu), 303-492-7588 (T), 303-492-8960 (F).

## 1. INTRODUCTION

The massive expansion of foreign direct investment (FDI) in recent years to such emerging countries as China, India and Brazil has increasingly been accompanied by growth in innovation by local firms in those markets. Such innovation may be seen in rapid growth in domestic enterprise research and development (R&D) expenditures and in patent applications at home and abroad (OECD, 2005; WIPO, 2007). It seems likely that these trends are jointly related in that more inward FDI permits additional domestic imitation and learning, from which innovation springs. Moreover, the expanded innovation in developing economies sets up the possibility of *backward spillovers*: firms in developed countries may learn from inspecting new products and technologies imported from the developing world.

The evolution of optical storage media in audio/video systems illustrates this process. The earliest technology was the audio compact disc (CD), available in Western countries by the early 1980s. In 1993, Wanyan Electronics, a Chinese firm, invented the more affordable video compact disc (VCD) and VCD players, which quickly became popular in mainland China but were rarely known in the Western world (Xu, 2006). This invention was made possible through inspection of the technology sold by C-Cube Microsystems (an American company, which combined the CD with the MPEG-1 standard) and learning the production process of firms producing compact disks in China's special economic zones. However, Wanyan Electronics failed to patent their products, which were duplicated by domestic and international firms (Xu, 2006). Among these were the Japanese and European companies, such as Sony and Philips, which have international patents covering VCD standards (Linden, 2003). These companies, along with the US innovator of the MPEG-2 standard, later jointly invented the Digital Video Disc (DVD) technology.

This history illustrates the possibility we analyze here: a global technology is imported into an emerging economy, where it is imitated and then improved through local innovation.

The new product, in turn, is learned by companies in the developed world and serves as the basis for further innovation. For this purpose, we set out a dynamic, general-equilibrium model in which FDI, imitation, learning-by-doing (LBD) and innovation are jointly determined and ultimately affect economic growth. The model combines elements of those in Baldwin, Braconier and Forslid (BBF, 2005) and Lai (1998) but extends both. In BBF, firms in two symmetric developed countries perform R&D to generate new knowledge, subject to spillovers from the general knowledge pool and local LBD. We extend their analysis by permitting different learning productivities between a developed nation (the North) and a developing economy (the South) and higher-cost innovation in the latter. Lai introduced FDI into an endogenous North-South model but did not permit innovation in the developing country, nor did he consider LBD, both of which exist here.

In our benchmark model, after new knowledge is applied to production, Northern firms choose the physical location of their production between the North and South. Firms in the South learn from observing the operations of multinational firms, imitate some of the new varieties, and compete in these varieties. In our extension, Southern firms are able to invent new products based on local technology pool and LBD spillover. Finally and most importantly, Southern new knowledge also spills over back to the North to reduce unit cost of innovation there. To our knowledge this is the first model to study Southern innovation and backward knowledge spillovers in a general-equilibrium, endogenous FDI model.

Within this framework we analyze how changes in intellectual property protection (IPP) in the South, indexed by the imitation rate, affect these processes. In the benchmark model, without the possibility of innovation in the South, a rise in imitation reduces inward FDI in equilibrium. This tends to reduce global growth in new products because less labor is allocated to innovation in the North. When the South is able to learn from FDI and develop its own products, innovation without backward spillovers restricts FDI flows compared to the

benchmark. Since Southern innovation efficiency is lower than its Northern counterpart, the equilibrium growth rate is lower than the benchmark rate at each given imitation rate.

However, the relationship between imitation and multinationalization exhibits a U-shape because increases in the former first reduce FDI directly but ultimately increase it through a competition effect arising from the expansion of Southern new varieties. Finally, with a significant reverse spillover the enhanced innovation possibilities in the North generate more rapid growth than in the case without such learning. As a consequence, the growth rate is also U-shaped in imitation and may exceed its benchmark value without Southern innovation.

We briefly survey relevant literature in Section 2. We develop our benchmark model, where the South imitates multinational varieties without engaging in R&D or generating new knowledge, in Section 3. In Section 4 we introduce Southern innovation and backward knowledge spillover into the model. We perform extensive simulation analysis in Section 5 to compare models with and without Southern innovation and determine how the extent of backward spillover affects other key variables, including steady-state growth. We conclude in the final section.

## **2. RELEVANT LITERATURE**

Early models of vertical FDI did not include knowledge spillovers in innovation (Grossman and Helpman, 1991a; Helpman, 1993), so that multinational corporations (MNCs) played no direct role in determining the growth rate. Later models, such as Lai (1998), Keller (1998), and Glass and Saggi (2002), began to fill this gap by assuming that the efficiency of innovation depends on the stock of existing knowledge. However, these models assumed that knowledge contributes the same to further innovation regardless of its location and characteristics, which is not consistent with empirical studies. Jaffe, Trajtenberg and Henderson (JTH, 1993), Sjöholm (1996), and Keller (2002) showed that the

scale of spillover effects from knowledge transfer is geographically limited and the scope of technology diffusion is severely limited by distance.

BBF (2005) is the first study that distinguished among channels of knowledge spillover in a theoretical FDI model. In their model, innovators fully understand domestic knowledge but can only partially make use of foreign knowledge. The LBD spillover to innovation is introduced into a symmetric North-North framework, where innovators become more efficient if they watch more local production processes. FDI activities promote innovation and growth in both regions since innovators everywhere become more efficient by learning the production processes of increasing varieties.

Whether FDI exists in equilibrium in BBF is determined by comparing two exogenous parameters: the trade cost and the fixed-cost premium when setting up a firm abroad. The rate of multinationalization is undetermined and the authors “take it as determined by factors outside of the model”. Therefore, although the share of domestic varieties transferred abroad is crucial to the efficiency of innovation and growth in both regions, the equilibrium level of this share is unanswered.

An exogenous rate of multinationalization as in BBF is questionable in a North-South model. Bringing knowledge to the South to take advantage of the low wage rate is the incentive for many firms in the North to engage in FDI. At the same time, transferring production to the South would alter the wage gap between the host and home countries, thereby changing firms’ incentives for FDI. Thus, the multinationalization rate, investment in Northern innovation, the growth rate, and the wage gap should be endogenized in the BBF framework, which is our point of departure.

These variables are endogenized by standard dynamic North-South FDI models such as Helpman (1993), Lai (1998) and Glass and Saggi (2002), but Northern innovation in these models has only one source of learning. An interesting additional question posed in those

articles is the effect of more rigorous regulation in IPP in the South on the rate of Northern innovation and global growth. Helpman showed that, in the presence of FDI, a fall in the imitation rate would cause the South to suffer from both a deterioration of its terms of trade and higher prices paid for a larger fraction of products. Lai found that a lower rate of imitation encourages the North to increase the rate of both innovation and multinationalization, which raises the growth rate of the South. However, Glass and Saggi showed that a low imitation rate exposes both MNCs and Northern firms to less risk, producing larger monopoly profits in production and thereby reducing both FDI and innovation. These papers generate considerable insights but do not consider the possibility of induced Southern innovation and what we call backward spillovers.

Thus, in this paper we develop an endogenous product cycle model where the multinationalization rate is endogenous to imitation and other factors but variations in this rate subsequently affect the growth rate. We distinguish among channels of knowledge spillovers by assuming that the extent of spillovers depends on the geographic location and ownership of general knowledge and the location of production processes. Finally, we analyze three scenarios regarding Southern innovation, where the imitation rate has different impacts on growth.

### **3. BENCHMARK MODEL WITH COSTLY IMITATION IN THE SOUTH**

We begin with a North-South model of MNCs with endogenous knowledge innovation in the North based on different knowledge spillover effects. The theory combines and builds on those of Grossman and Helpman (1991b), Lai (1998) and BBF.

There are two final goods, with  $Y$  the homogeneous good and  $X$  the manufacturing good with differentiated varieties. The market for the homogeneous product is perfectly competitive, while that for the manufacturing good is monopolistic competition. There is only one factor, labor. That is, no physical capital is necessary for setting up a firm on

producing either  $X$  or  $Y$ . However, the relevant technology needs to be acquired before any variety of  $X$  can be produced. In order to get the new technology, labor is utilized in innovation. For now we assume that Southern labor has a sufficiently lower skill level than their Northern counterpart, so that only Northern labor has the capacity to innovate. Without inward FDI, firms in the South can only produce the homogeneous product. Let the Southern wage be normalized to be one and define the endogenous Northern wage to be  $w$ , which is greater than one. This implies that the North would produce only the differentiated product since it has a cost disadvantage in the homogeneous sector. Thus, the two regions would engage in complete specialization if no MNCs exist.

However, MNCs might emerge in this model due to the wage gap between North and South. All innovation activities take place in the North by investing part of the Northern labor for R&D. When the new knowledge is generated and the technology is ready for industrial application, one unit of labor is needed for producing each unit of the new variety. Thus, firms in the North can choose to keep all production at home and serve the Southern market by exports. For simplicity we normalize constant unit trade costs to be zero. However, because of the lower wage rate, firms in the North might want to transfer the technology to the South, establish and produce in a subsidiary there, and export back to the North. The disadvantage of being a multinational lies in both the one-time cost of setting up a plant and the risk of being imitated, reducing its monopoly power and profits.

It is possible, as suggested by Lai (1998), that the physical appearance of production in MNCs in the host country permits Southern imitators to learn production processes more easily by inspection than by reverse engineering imported goods. There are also empirical studies showing that, in both developed and developing countries, technology or productivity spillovers from inward FDI are larger than those from imports (Keller and Yeaple, 2009).

Therefore, for simplicity, we assume that exports from the North to the South are free from the risk of imitation, but local production within MNCs is not.

However, imitation by Southern firms is costly. To capture this possibility we model the duration between the time of an MNC setting up its plant in the South and the time of successful imitation as a random variable with a Poisson arrival rate. We assume that if the technology is imitated the South sets up a firm with no physical cost and produces for both markets the same variety it imitated from the targeted MNC, which exits production.

### 3.1 Consumption

Consumers have identical and homothetic preferences over the two final goods. The intertemporal utility function at time  $\tau$  is assumed to be:

$$(1) \quad U_\tau = \int e^{-\rho(t-\tau)} \ln \left[ C_X^\phi C_Y^{1-\phi} \right] dt$$

$$C_X \equiv \ln \left\{ \int_0^{n+m+b} c_h^{1/\varepsilon} dh \right\}^{1-1/\varepsilon}$$

where  $\rho > 0$  measures the time preference of consumers,  $\varepsilon > 1$  is the elasticity of substitution between varieties of  $X$ , and  $c_h$  is the consumption of variety  $h$ . Letters  $n$ ,  $m$ , and  $b$  represent the number of Northern, multinational, and Southern imitated varieties, respectively. There is one firm per variety.

The utility maximization problem yields a standard instantaneous CES demand function of variety  $h$ :

$$(2) \quad c_h = \frac{p_h^{-\varepsilon}}{n+m+b \int_0^{n+m+b} p_j^{1-\varepsilon} dj} \cdot \phi \cdot E = \eta_h \cdot \frac{\phi \cdot E}{p_h}$$



The consumption share of variety  $h$  is  $\eta_h \equiv p_h c_h / \phi \cdot E = p_h / P_X^{1-\varepsilon}$ , where

$$P_X = \left( \int_0^{n+m+b} p_h^{1-\varepsilon} dh \right)^{1/(1-\varepsilon)}$$

is the price index for manufacturing good  $X$ ,  $E$  is global

expenditure, and  $p_h$  is the price for variety  $h$ . Because varieties are assumed to be imperfect substitutes, the variety with a higher price would have a smaller market share.

### **3.2 Production, innovation and FDI**

The market for good  $Y$  is perfectly competitive while that for good  $X$  is monopolistic competition with product differentiation. The production of either type requires only one unit of labor ( $L$ ), regardless of the location and ownership of the firm. However, knowledge ( $K$ ) is required before the manufacturing goods are produced and the knowledge is generated by investing labor in R&D.

Northern innovation sector performs all R&D. Each unit of new knowledge is produced with  $a_I^N$  units of Northern labor. Following BBF, we assume that

$$(3) \quad a_I^N = \frac{1}{K^N + K^M + \mu n} \quad (\mu \geq 0)$$

Here,  $K^N$  and  $K^M$  are the cumulated knowledge stock owned by Northern firms and MNCs, respectively, with their sum constituting the world stock. This innovation function exhibits two types of spillovers from existing knowledge.<sup>3</sup> The first comes from the global knowledge pool. Northern innovators have complete access to knowledge held by Northern and multinational firms, since all knowledge is originally invented in the North. The second type of spillover is the LBD in the North. We assume that such learning is governed by

---

<sup>3</sup> In this model, as in BBF, Northern knowledge is the same as the number of Northern varieties but we permit two means by which this knowledge spills over into reduced innovation costs. The stock of multinational's knowledge is more than the number of their varieties due to the iceberg cost in FDI.

parameter  $\mu$ , which determines the ability to learn from existing local varieties in developing new goods. Thus, the efficiency of innovation is positively proportional to the number of varieties produced in the North. Note that the cost of innovation is then  $\Omega = wa_l^N$ .

Once a blueprint (i.e., a new variety of  $X$ ) is invented in the North, firms have the choice of either producing domestically or doing so abroad. If the firm chooses to transfer the technology to the South, it faces fixed iceberg costs to set up the plant. That is, if MNCs want to use one unit of knowledge for production in the South, they need to take  $(1+\Gamma)$  units of knowledge since the proportion  $\Gamma$  would “melt away” during the transfer process due to contracting problems, language differences and the like.

Finally, Southern firms imitate varieties introduced by MNCs with some time lag depending on a Poisson arrival process. Following Lai (1998), define this arrival rate as the change in varieties produced by Southern firms as a proportion of the available multinational ones:  $i = \Delta b / m$  ( $1 \geq i \geq 0$ ). The rate  $i$  is also the probability that any variety produced by MNCs is imitated by the South in each instant, which depends on the strength of IPP and the imitation ability of workers in the South. The higher is the imitation capacity and the weaker the strength of IPP, the sooner knowledge will diffuse from MNCs to Southern imitators. The number of imitated varieties per time period by the South is then

$\Delta b = im$ . Once the variety is copied, only the Southern firm produces the variety, which drives the price down to its marginal cost.

The profit-maximization price for Northern varieties is  $p = w/\alpha$  and that for multinational varieties is  $p = 1/\alpha$ , where  $0 < \alpha = 1 - 1/\varepsilon < 1$ . The price index of the

differentiated products is then  $P_X = \int_0^{n+m+b} p_j^{1-\varepsilon} dj = \left(\frac{w}{\alpha}\right)^{1-\varepsilon} n + \left(\frac{1}{\alpha}\right)^{1-\varepsilon} (m - im) + im$ . The

instantaneous profit functions for Northern and (unimitated) multinational firms are

$$(4) \quad \pi^M = \left( \frac{1}{\alpha} - 1 \right) c^M = \frac{(1-\alpha)\phi E}{w^{1-\varepsilon} n + m - im + im\alpha^{1-\varepsilon}}$$

$$\pi^N = \left( \frac{w}{\alpha} - w \right) c^N = \frac{(1-\alpha)w^{1-\varepsilon}\phi E}{w^{1-\varepsilon} n + m - im + im\alpha^{1-\varepsilon}}$$

As noted above, Southern profits are zero.

Assume that the North invest  $L_I^N$  units of Northern labor in R&D. The amount of new knowledge generated in each instant is

$$(5) \quad \Delta K = \frac{L_I^N}{a_I^N} = L_I^N (\mu \frac{K^N}{K^N + K^M} + \mu n)$$

In this model we study the steady-state equilibrium rather than the transition path, so that in any equilibrium there is only one knowledge share of multinationals. In other words, the growth rates of knowledge held by Northern firms and multinationals are the same and both equal the growth rate of world knowledge

$$(6) \quad g = g^N = g^M = \frac{\Delta K}{K^N + K^M} = L_I^N [1 + \mu(1 - \Sigma^M)]$$

where  $\Sigma^M = K^M / (K^N + K^M)$  is the share of knowledge owned by MNCs in all technology innovated in the North, which is between zero and one. Note that, although the growth rate in equation (6) is written in terms of endogenous variable  $L_I^N$  and  $\Sigma^M$ , these two variables can be expressed by exogenous parameters at the steady state so that the growth rate is also time invariant at the steady state. Also define  $\Sigma^N = K^N / (K^N + K^M) = 1 - \Sigma^M$  to be the share of knowledge held by Northern firms. Since the South imitates existing multinational varieties at rate  $i$  at each instant, it grows at the same rate  $g$  as the North.

The discounted operating profit of a Northern firm at time  $\tau$  is  $\Pi^N \equiv \int_{t=\tau}^{\infty} e^{-r(t-\tau)} \pi_t^N dt$ .

Note that a higher interest rate reduces discounted profits. Further, the faster new varieties are innovated (i.e. the faster the growth rate), the lower the expected future profit for each variety. Therefore, the expected profit of a Northern firm is

$$(7) \quad \Pi^N = \frac{\pi^N}{\rho + g}$$

A multinational firm can only enjoy its monopolistic profit before its variety is imitated.

Therefore, the expected profit for MNCs is  $\Pi^M = \int_{t=\tau}^{\infty} \left[ \left( \int_{\delta=0}^{\tau} \pi^M e^{-r\delta} d\delta \right) \cdot \text{prob}(\delta = \tau) d\delta \right] dt$ ,

where  $\text{prob}(\delta = \tau)$  is the probability that a variety produced by MNC has been copied at time  $\tau$ . With the standard Poisson arrival rate, the duration  $\tau$  between the time of an MNC setting up its firm in the South and the time of imitation follows the probability density function  $\text{prob}(t = \tau) = e^{-i\tau}$  and  $i$  is the Poisson arrival rate at which a variety would be imitated in the next instant under the condition that it has not yet happened. Thus, the

expected profit function for an MNC is  $\Pi^M = \int_{t=\tau}^{\infty} \left( \int_{\delta=0}^{\tau} \pi^M e^{-r\delta} d\delta \right) \cdot e^{-i\tau} dt$ . Again, the

interest rate and the growth rate of new varieties need to be accounted for, as does the new factor of imitation risk. The multinational's expected profits becomes

$$(8) \quad \Pi^M = \frac{\pi^M}{\rho + i + g}$$

### 3.3 Equilibrium choice of FDI

Northern firms choose their production location after the new technology is innovated. In equilibrium, the choice between being an MNC or a Northern firm is based on the following equation with complementary slackness.

$$(9) \quad \Sigma^M (1 - \Sigma^M) \left[ \frac{\Pi^N}{\Omega} - \frac{\Pi^M}{\Omega(1 + \Gamma)} \right] = 0$$

Equation (9) shows that, after successfully inventing the new variety, firms in the North compare the ratio of the expected operating profits and set-up costs in order to choose location. Plug equations (7) and (8) into equation (9) and rewrite the equation with complementary slackness as the follows:

$$(10) \quad \begin{aligned} \Sigma^M = 1 \quad \text{and} \quad & \frac{\pi^M}{(\rho + i + g)(1 + \Gamma)\Omega} \geq \frac{\pi^N}{(\rho + g)\Omega} \\ \Sigma^M = 0 \quad \text{and} \quad & \frac{\pi^M}{(\rho + i + g)(1 + \Gamma)\Omega} \leq \frac{\pi^N}{(\rho + g)\Omega} \\ 0 < \Sigma^M < 1 \quad \text{and} \quad & \frac{\pi^M}{(\rho + i + g)(1 + \Gamma)\Omega} = \frac{\pi^N}{(\rho + g)\Omega} \end{aligned}$$

The first equation states that all firms in the North would move their production to the South ( $\Sigma^M = 1$ ) if the expected profits of being a multinational are higher than those of being a Northern firm. The second indicates that all firms would remain in the North ( $\Sigma^M = 0$ ) if the opposite happens. The final condition states that firms are indifferent among locations ( $1 > \Sigma^M > 0$ ) if the discounted returns of the two types of firms are the same.

### 3.4 Market-clearing conditions

The instantaneous expenditure of the South simply equals the labor income of the whole economy, which also equals the total population of the South since the Southern wage is normalized to one. Northern workers get labor income and we assume that all profits are earned by the owner of the firm. Thus, the North enjoys the profits from both Northern firms and MNCs remaining in operation. However, part of the income stream needs to be allocated in generating new knowledge. The extra cost that MNCs pay to set up the plant in the South does not show up explicitly in the expenditure function but is embodied in their profit. Therefore, the instantaneous expenditure function for each region is the following.<sup>4</sup>

$$(11) \quad E^S = L^S$$

$$(12) \quad E^N = wL^N + \pi^N n + \pi^M (m - im) - wL_I^N$$

$$(13) \quad E = E^S + E^N$$

where  $L^S$  and  $L^N$  are the population in the South and North, respectively.

The labor endowment in the North is used in R&D and the production of Northern varieties and the Southern labor endowment is utilized in producing multinational varieties not yet imitated, imitated varieties ( $B$ ), and the homogeneous product. Thus, the labor market clearing conditions are as the follow.

$$(14) \quad L^S = L_Y + (m - im) \cdot x^M + im \cdot x^B$$

$$(15) \quad L^N = L_I^N + n \cdot x^N$$

---

<sup>4</sup>As in BBF (2005), we assume there is no population growth. Thus, when the number of varieties increases in the presence of a fixed labor force, the quantity of consumption for each variety would decrease to balance the labor market.

### 3.5 Dynamic Equilibrium

Tobin's  $q$  theory is used in solving the dynamic equilibrium. This theory, initiated by Tobin (1969), states that equilibrium capital should be valued at its reproduction cost in the long run. As described in Baldwin and Forslid (2000), the difficulty of analyzing dynamic models is influenced by the choice of the state variable, numeraire and solution methodology. In a product-innovation model like ours, investment determines the rate of knowledge accumulation, which in turn determines the rate of growth, so that the natural state variable is the amount of resources devoted to investment. Since our model has only one primary factor, labor, it naturally becomes the numeraire and the investment in Northern innovation ( $L_t^N$ ) is the natural state variable. Tobin's  $q$  theory, thus, provides a powerful method to solve for the state variable by examining equilibrium investment choices.

In our model, the expected operating profits of Northern firms and multinationals, if they exist, should exactly cover their costs of acquiring the technology and other costs before production takes place. That is, Tobin's  $q$  value for Northern and multinational firms should equal one in dynamic equilibrium, where  $V$  is the firm value.

$$(16) \quad q^N \equiv \frac{V^N}{\Omega} = q^M \equiv \frac{V^M}{(1+\Gamma)\Omega} = 1$$

Comparing this to the inequality conditions in (10) on FDI choices we find that if all firms choose to be Northern firms ( $\Sigma^M = 0$ ) or all decide to be multinationals ( $\Sigma^M = 1$ ), either Northern firms or multinationals are making long-term positive profits and dynamic equilibrium cannot be reached. Therefore, we exclude those two inequality conditions and

analyze only the equation stating that Northern and multinational firms should coexist.<sup>5</sup> It is illuminating to rewrite that condition as

$$(17) \quad \frac{1}{\rho + L_i^N [1 + \mu(1 - \Sigma^M)] + i + \Gamma} = \frac{w^{1-\varepsilon}}{\rho + L_i^N [1 + \mu(1 - \Sigma^M)]} \quad (\text{for } 0 < \Sigma^M < 1)$$

This condition shows that an increase in the imitation rate ( $i$ ) or Southern relative cost premium ( $\Gamma$ ) makes MNCs less profitable, *ceteris paribus*; while an increase in the Northern LBD spillover ( $\mu$ ) has the opposite effect.

Use equations (11) to (15) to express  $\Sigma^M$ ,  $w$ ,  $E$ ,  $E^N$  and  $E^S$  in terms of the state variable  $L_i^N$  and parameters ( $\Gamma$ ,  $i$ ,  $\mu$ ,  $\varphi$ ,  $\varepsilon$ ,  $\rho$ ,  $L^N$  and  $L^S$ ) and substitute these variables into equation (16). Then, the equilibrium level of investment in Northern innovation can be solved with equation (17) satisfied for  $0 < \Sigma^M < 1$ . The equilibrium growth rate  $g$  can also be solved by substituting Northern R&D investment ( $L_i^N$ ) and the multinationalization rate ( $\Sigma^M$ ) into equation (6).

The analytic solution of the model cannot be used to describe how parameter changes affect key variables. Thus, after presenting our extended model, we engage in simulation in Section 5 to examine these relationships.

#### 4. SOUTHERN INNOVATION AND ‘BACKWARD’ KNOWLEDGE SPILLOVERS

Next we extend the model to permit investments in R&D by Southern firms. The introduction of Southern innovation and backward knowledge spillover alters the innovation sector directly. In addition to its own knowledge pool and LBD from the number of

---

<sup>5</sup> It is interesting to note that in the “corner solutions” in which there is either full Northern production or full technology transfer of varieties to the South, the rate of multinationalization has no impact on innovation or growth.



varieties produced locally, the North also absorbs knowledge from the South. The more knowledge the South creates and the more easily it flows to the North, the lower would be the unit labor cost for Northern innovation.

Like their Northern counterparts, Southern innovators learn from two sources, general knowledge and LBD. However, since the South is less developed, we assume its innovators are less productive in using knowledge, so that innovation functions are asymmetric. Specifically, we assume that Southern innovators cannot access Northern general knowledge, either because it is too difficult to reverse engineer or the IPP protection in the North is too strong. Put differently, instead of utilizing international knowledge, Southern innovators only use knowledge from the local pool, which consists of knowledge previously invented in the South and that held by multinationals. As for LBD, we assume that Southern firms learn from production methods of Southern imitators and innovators only. That is, MNCs are capable of disguising their processes sufficiently to preclude that form of spillover directly to Southern rivals. Thus, LBD comes from the number of varieties the South previously invented and is producing ( $s$ ) and the number of varieties it imitates from MNCs ( $im$ ).

Collecting ideas, the unit labor cost of Northern innovation ( $a_i^N$ ) and Southern innovation ( $a_i^S$ ) are as follows.

$$(18) \quad a_i^N = \frac{1}{K^N + K^M + \lambda \cdot K^S + \mu \cdot n} \quad (0 \leq \lambda \leq 1 \& \mu \geq 0)$$

$$(19) \quad a_i^S = \frac{1}{\frac{K^M}{1 + \Gamma} + K^S + \theta(i \cdot m + s)} \quad (\theta \geq 0)$$

Southern knowledge is defined to be only Southern-innovated varieties and not the ones imitated from MNCs. Parameter  $\lambda$  is the backward knowledge spillover parameter that measures how easy it is for Northern innovators to observe and absorb Southern new

knowledge. The Southern LBD spillover parameter ( $\theta$ ) is similar to the Northern LBD spillover parameter ( $\mu$ ) and measures the extent that innovators learn from watching local production processes.

The rates of knowledge accumulation for the North ( $g^N$ ) and South ( $g^S$ ) depend on R&D investment levels in each region, the unit labor costs of innovation, and the initial knowledge stocks. Define the South-North knowledge stock ratio to be  $\Sigma^S = \frac{K^S}{K^N + K^M}$ .

The regional growth rates become

$$(20) \quad g^N = g^M = \frac{\Delta(K^N + K^M)}{K^N + K^M} = L_I^N [1 + \lambda \Sigma^S + \mu(1 - \Sigma^M)]$$

$$(21) \quad g^S = \frac{\Delta K^S}{K^S} = \frac{L_I^S \left[ \frac{K^M}{1 + \Gamma} + K^S + \theta(im + s) \right]}{K^S} = \frac{L_I^S \left[ K^M (1 + i\theta) + (1 + \Gamma)\Sigma^S (1 + \theta) \right]}{(1 + \Gamma)\Sigma^S}$$

Again, although the growth rates are written in endogenous variables, these variables can be expressed by exogenous parameters at the steady-state equilibrium so that the growth rates are also time invariant.

Consumption behavior is the same as in the benchmark model except that consumers also access unimitated Southern-innovated varieties and imitated Southern-varieties.

Accordingly, the global price index of the differentiated-goods sector now takes into account Southern goods.

$$(22) \quad P_X = \int_0^{n+m+b+s} p_j^{1-\varepsilon} dj = \left( \frac{w}{\alpha} \right)^{1-\varepsilon} n + \left( \frac{1}{\alpha} \right)^{1-\varepsilon} (m - im) + im + \left( \frac{1}{\alpha} \right)^{1-\varepsilon} (s - is) + is$$

The only difference in production lies in the South, which in addition to multinational and imitated varieties also produces its own innovated varieties. These enjoy the same instantaneous monopolistic profit as unimitated multinational varieties. Instantaneous profit

for Northern ( $N$ ), unimitated multinational ( $M$ ), and unimitated Southern-innovated varieties ( $S$ ) are as follows.

$$(23) \quad \pi^N = \left( \frac{w}{\alpha} - w \right) x^N = \left( \frac{1-\alpha}{\alpha} \right) \frac{w^{1-\varepsilon} \phi(E^N + E^S)}{\alpha^{-\varepsilon} \cdot P_x}$$

$$(24) \quad \pi^S = \pi^M = \left( \frac{1}{\alpha} - 1 \right) x^M = \left( \frac{1-\alpha}{\alpha} \right) \frac{\phi(E^N + E^S)}{\alpha^{-\varepsilon} \cdot P_x}$$

The FDI choice of firms in the North is based on the same condition as in the benchmark model (equation (9)).

The market-clearing conditions include two equations in each of the goods markets and labor markets. The amount of income in the South that can be spent in consumption is the sum of Southern workers' labor income and monopolistic profits of unimitated Southern innovative firms, excluding R&D investment. Spendable income in the North is the sum of Northern workers' labor income and monopolistic profits of Northern and unimitated multinational firms, excluding R&D expenditure. Northern labor is used to invest in R&D and produce Northern varieties, while Southern is now allocated to R&D as well as production of homogeneous products, unimitated multinational varieties, imitated varieties, and Southern varieties.

$$(25) \quad E^S = L^S + \pi^S (s - is) - L_I^S$$

$$(26) \quad E^N = wL^N + \pi^N n + \pi^M (m - im) - wL_I^N$$

$$(27) \quad L^N = L_I^N + n \cdot x^N$$

$$(28) \quad L^S = L_Y + (m - im) \cdot x^M + (s - is) \cdot x^S + (im + is) \cdot x^B + L_I^S$$

Finally, applying Tobin's  $q$  condition, the expected operating profits of firms need to be the same as the cost of generating the variety in the innovation sector.

$$q^M \equiv \frac{V^M}{(1+\Gamma)wa_I^N} = \frac{\Pi^M}{(1+\Gamma)wa_I^N} = 1$$

$$q^S \equiv \frac{V^S}{a_I^S} = \frac{\Pi^S}{a_I^S} = 1$$

The question remaining is how to discount the expected profits ( $\Pi^M$ ,  $\Pi^N$  and  $\Pi^S$ ). All variables in the instantaneous operating profit functions (23) and (24) are time-invariant in steady-state equilibrium except for  $\Sigma^S$  and  $(K^N + K^M)$ . The Northern knowledge stock grows at a time-invariant rate  $g^N$  at the dynamic equilibrium as before. Therefore, the system is solvable only when  $\Sigma^S$  is also time-invariant at the steady-state equilibrium. This implies that the growth rates of Southern and Northern knowledge are equal to each other in the steady-state equilibrium.

$$(29) \quad \frac{g^S}{g^N} = 1 \Rightarrow \frac{L_I^S \left[ \Sigma^M (1+i\theta) + (1+\Gamma)\Sigma^S (1+\theta) \right]}{(1+\Gamma)\Sigma^S} = L_I^N [1 + \lambda\Sigma^S + \mu(1-\Sigma^M)]$$

In addition, since both multinational firms and innovative firms producing in the South suffer the risk of imitation in the local market, Tobin's  $q$  conditions for multinational and Southern firms become

$$(30) \quad q^M = \frac{\frac{\pi^M}{\rho + g + i}}{(1+\Gamma)wa_I^N} = 1$$

$$(31) \quad q^S = \frac{\frac{\pi^S}{\rho + g + i}}{a_I^S} = 1$$

Note that the instantaneous profits for multinational and Southern firms are the same and they face the same risk of imitation. Thus, the expected profits, hereby the set-up cost, in equilibrium of these two types of firms are also the same:

$$(32) \quad \frac{1}{a_i^S} = \frac{1}{(1+\Gamma)wa_i^N}$$

Because setting up a firm in a foreign (developing) country, is more costly than doing so domestically (in a developed country) the set-up cost premium ( $\Gamma$ ) is positive. Thus, the unit cost of innovation, or the innovation efficiency, in the South ( $a_i^S$ ) is always larger than that in the North ( $wa_i^N$ ). This inefficiency means that expanded innovation in the South bears the potential to reduce growth.

Finally, expected profits can be discounted and the FDI choice of Northern firms is again characterized by the system (10). Now the following equation must hold for an interior solution of the multinationalization rate.

$$(33) \quad \frac{1}{\rho + L_i^N [1 + \lambda \Sigma^S + \mu(1 - \Sigma^M)] + i(1 + \Gamma)} = \frac{w^{1-\varepsilon}}{\rho + L_i^N [1 + \lambda \Sigma^S + \mu(1 - \Sigma^M)]}$$

(for  $0 < \Sigma^M < 1$ )

This system of equations from (25) to (32) describes the steady-state equilibrium.

As with the benchmark model the analytic solution of this extension cannot be used to describe how parameter changes affect key variables. We, therefore, turn to simulation.

## 5. SIMULATION ANALYSIS

The commodity markets and labor-markets clearing conditions (11) to (15), Tobin's  $q$  free-entry condition (16), the global growth rate in (6) and the FDI choice condition (17) are simulated as a system for the benchmark model. For the extended model with Southern innovation, equations (25) to (31) with condition (33) are simulated. These simulations only examine the long-run, steady-state equilibrium without discussing the transition path.

We consider three cases for each simulation: the benchmark model, the situation in which Southern firms innovate but there is no backward spillover ( $\lambda = 0$ ), and the case with partial

backward spillover ( $\lambda < 1$ ). We are interested in the impacts of Southern innovation on multinationalization choices and the global growth rate as other policy-related parameters change. These parameters include the imitation rate ( $i$ ), which can be interpreted as a measure of the strength of Southern patents, relative investment barriers ( $I$ ), the Northern LBD spillover ( $\mu$ ), and the Southern LBD spillover ( $\theta$ ). The benchmark value of these parameters and the range over which they vary are taken from the literature or calculated from available statistics. We describe these calculations in the Appendix and the selected parameters are shown in Table 1.

[Table 1 here]

The fundamental difference between models with and without Southern innovation lies in the role of the South. In the benchmark model, Northern firms select innovation and the multinationalization rate in light of the imitation threat and cost parameters. In the extended model, both Northern and Southern firms choose R&D investment levels in response to available knowledge and production processes from which they learn. The relative labor demands and the rate of multinationalization are co-determined by the two regions. Specifically, Southern innovation increases domestic labor demand for both innovation and production of Southern varieties. Thus, *ceteris paribus*, the rate of multinationalization in the extended model will be lower than that in the benchmark model because there is less labor available for international firms.

### **5.1 Changes in the imitation rate ( $i$ )**

In the benchmark model, the North is the only innovator but MNCs are subject to imitation risk. When the Southern imitation rate decreases, either because local firms are less productive at imitation or there is stronger IPP, this risk diminishes, encouraging more firms in the North to move their production abroad. This rise in multinationalization is shown by the dotted line in Figure 1, reading from right to left.

The impact on growth is determined by two offsetting forces. On the one hand, diminished imitation risk raises the profits of Northern innovative firms, inducing a rise in R&D investment. On the other hand, the rise in the proportion of firms moving production abroad decreases innovation efficiency by having fewer local production processes in the North for LBD. The net impact on the knowledge growth rate is governed by Equation (6):  $g = L_I^N [1 + \mu(1 - \Sigma^M)]$ . This states that the overall effect depends on the relative strength of the increase in R&D investment ( $L_I^N$ ) and the decrease in innovation efficiency from having diminished LBD ( $1 - \Sigma^M$ ). Our simulation shows that, as depicted by the dotted line in Figure 2, the effect of the change in R&D dominates so that the growth rate increases as the Southern imitation rate goes down.<sup>6</sup> Put differently, higher rates of FDI activity are associated with higher global variety growth. This finding is consistent with Lai's (1998) result that, in the presence of FDI, stronger Southern IPP tends to attract more firms to become multinationals and also boosts innovation and growth.

Finally, the higher FDI activity raises Southern labor demand, resulting in a narrowing wage gap as imitation falls, as indicated by Figure 3. Thus, in this benchmark model, stronger IPP increases the relative Southern wage through the induced impact on FDI.

[Figures 1, 2 and 3 here]

Next, we introduce Southern innovation into the model without any possibility of backward spillover ( $\lambda=0$ ). Focus initially on the impact of this change on multinationalization, holding Southern imitation constant. Southern innovation will have two offsetting impacts. First, compared to the benchmark case, some Southern labor is allocated to innovation, squeezing out some multinationals and keeping more production in

---

<sup>6</sup> In fact, simulations across many parameter values show that this result always holds for an interior multinationalization rate.

the North. This direct effect is offset by the fact that the appearance of new Southern varieties takes market share and profits from existing Northern varieties. This competition effect induces more Northern firms to become MNCs in order to exploit lower Southern production costs, raising the multinationalization rate.

Simulation shows that when the backward spillover possibility is excluded the direct negative effect on FDI dominates so that the rate of multinationalization, shown by the starred line in Figure 1, is lower than in the benchmark model for any imitation rate within the range depicted. It is possible, however, that at higher imitation rates the competition effect overwhelms the direct effect and there is a higher degree of multinational activity even with Southern innovation.

Note that there is a U-shaped relationship in Figure 1, where multinationalization first falls then rises with imitation. Higher imitation risk through, say, weaker IPP diminishes MNC profits and reduces the multinationalization rate, which dominates at lower imitation rates. On the other hand, an increase in the imitation rate also expands the Southern innovation ability through LBD and Southern varieties expand faster. This effect would erode the profits of existing varieties and, since Northern varieties have a higher price they would suffer relatively larger reductions in market share and profits. In this sense, more firms in the North would want to be MNCs as the imitation rate goes up. This impact dominates at higher imitation rates and MNC activity goes up. To our knowledge, this is the first model that generates this non-monotonic effect of imitation on MNCs through the operation of Southern innovation.

Turning to Figure 2, we find that the impact of Southern innovation is always to reduce global innovation at any level of imitation risk. The fact that knowledge growth rates are lower than in the benchmark reflects the inefficient specialization permitted by Southern innovation. Specifically, where there is reduced MNC activity, more labor is used in



production in the North, decreasing R&D there. In this sense, some Southern labor is allocated to innovation and additional Northern labor to production. This substitution of labor in both regions expands activities in which each is disadvantaged. As a consequence, global knowledge accumulates at a lower rate. Interestingly, even where there is increased multinationalization at higher imitation rates the net effect is still to reduce global growth.<sup>7</sup>

Next, the introduction of Southern innovation increases local labor demand but this is more than offset by squeezing out MNCs, which raises labor demand in the North. Thus, the North-South wage gap becomes larger than that in the benchmark model, as noted by the starred line in Figure 3.

We are also interested in how changes in imitation rate affect Southern R&D investment, measured here by labor allocated to innovation. As shown by the starred curve in Figure 4, the impact of higher imitation risk (weaker IPP) is non-monotonic: investment in Southern R&D first rises and then falls. This reflects the balance between changes in multinational activity and the growing numbers of imitated varieties. In fact, there are multiple processes in operation. First, a rise in imitation risk reduces (raises) MNC activity in the lower (higher) range of imitation rates. In turn, there is a fall (rise) in knowledge available to spill over to Southern innovation, reducing (raising) Southern R&D. Second, increases in  $i$  expand the efficiency of imitation, generating more imitated varieties per unit of both new MNC and Southern varieties. One impact is to generate more LBD, which expands Southern R&D investment. At the same time, however, greater imitation efficiency pushes more Southern labor into production of imitated varieties, which reduces labor available for R&D. Third, the higher imitation risk, which reflects weaker patent protection, would reduce the rents to new Southern-owned varieties. This would also limit investments in innovation in the South. This inverted-U relationship between patent rights and local

---

<sup>7</sup> Note that the global innovation curves converge at higher degrees of imitation.

innovation has been noted in other theoretical contexts (Park, 2008) but only in single-country models. It arises in our North-South model from a novel mix of imitation and innovation in the current framework.

[Figure 4 here]

Consider next a high degree of backward spillover ( $\lambda=2/3$ ). In general, the same processes described above still hold. However, compared to the zero-spillover case, the new feature introduced by this situation is that the South-North spillover increases innovation efficiency in the latter region. The immediate impact is that that more new varieties would be generated, which establishes a higher global innovation growth rate, as noted by the triangle-shaped curve in Figure 2. As noted by the corresponding curve in Figure 1, the result of more Northern innovation is a higher degree of multinationalization as firms migrate to take advantage of cheaper production costs. And in Figure 3 we find that the North-South wage ratio is lowest in this case since Southern labor is in high demand from MNC production in addition to its allocation to R&D.

To examine the impacts of changing imitation risk in this scenario, first consider Figure 4, in which the triangle-shaped curve depicts Southern labor invested in R&D. We again get an inverted-U shape: R&D first rises, then falls as patents get weaker and imitation rates rise. We now find that Southern R&D investment bends downward at a lower imitation rate and it drops faster than in the no-spillover case.<sup>8</sup> The intuition is that the backward spillover is

---

<sup>8</sup> In fact, in the simulation Southern innovation reaches zero at an imitation rate of approximately 0.27 and would become increasingly negative beyond that point. Negative innovation cannot be an equilibrium. Indeed, at this same point, the multinationalization rate would no longer be computed to lie within the interior solution range we consider in equation system (10). Beyond this rate of imitation, the remaining variables in Figures 1-3 are indeterminate. Note that the same cutoff would happen at a higher imitation rate (not shown) in the case of zero backward spillover.

sufficiently significant that a greater proportion of new Southern varieties faces more rapid competition from Northern innovation per unit of time. Further, the expansion of Northern innovation induces a greater FDI flow, reducing Southern labor available for innovation. In combination with the growing risk from higher imitation, Southern firms find it less profitable to invest in R&D.

We note one potential policy implication in Figure 4. If the Southern government is interested in expanding local investments in innovation, our analysis suggests that it can be fairly lax in its IPP in the absence of any backward spillover. However, if new Southern varieties easily leak back to the North, the need for stronger patent rights becomes paramount in encouraging local R&D.

Note in Figure 1 that the U-shaped relationship remains and that multinationalization starts to rise at a lower imitation risk compared to the case with no spillover. This indicates that the competition effect we described above is stronger with the backward spillover. The intuition is that more new Southern varieties leak back into the North, generating a higher innovation rate and raising the share of firms becoming multinationals to take advantage of lower production costs.

A new feature is that, as shown by the triangle-shaped line in Figure 2, there is now a U-shaped relationship between the rate of imitation and growth. The reason is that when the multinationalization rate increases with a rising imitation rate (Figure 1), Southern innovation efficiency expands (even as overall investment in R&D falls in Figure 4) because there are both a higher level of general knowledge brought to the South and a larger LBD spillover. Moreover, the Northern innovation efficiency benefits through the backward spillover. Finally, these high rates of multinationalization and imitation imply that the North transfers a larger share of its varieties to the South. In consequence, both regions engage more in

activities in which they have greater relative advantage. Thus, the global growth rate can rise with weaker Southern IPP and may even surpass the level in the benchmark model.

To summarize this section, consistent with Lai (1998), if the South only imitates, a low imitation rate (strong IPP) attracts more FDI, expands global innovation and promotes Southern imitation, so that both regions grow at a higher speed. The novelty here is to consider the effects of endogenous Southern innovation, with and without the backward spillover. Our model demonstrates that the relationship between the rate of imitation and multinationalization thus becomes U-shaped. The intuition is that a high imitation rate implies a high learning ability of the South, which expands Southern varieties and expands FDI incentives through a competition effect.

Concerning innovation growth, we find the following. With Southern innovation permitted but no backward spillover, the fact that the innovation efficiency in the South is lower, while the production efficiency is higher, pushes labor in both regions to engage more in activities in which they are disadvantaged. Thus, the growth rate is always lower than in the benchmark model. However, the impact can be reversed by a significant backward spillover. In this case, the higher rate of multinationalization increases Southern innovation efficiency and also benefits Northern innovation. As a result, the backward spillover can restore the efficiency loss from Southern innovation and generate a higher growth rate, even relative to the benchmark model when the imitation rate is high.

## **5.2 Change in foreign relative investment barrier ( $I$ )**

A lower investment barrier in the South makes it more profitable for firms in the North to move their production abroad in the benchmark model, so that the multinationalization rate goes up.<sup>9</sup> In addition, more labor is allocated to the R&D sector while less local varieties can be used in LBD for Northern innovators. The prior effect dominates so that the growth

---

<sup>9</sup> To conserve space we do not present the simulation diagrams from this or the next sub-section.

rate increases as the investment barrier declines in the South. Finally, more Southern labor is demanded in producing differentiated varieties so that the wage gap narrows.

When Southern innovation is considered without the backward spillover ( $\lambda=0$ ), the direction of change of all key variables stays the same as in the benchmark when the cost premium rises. However, the extent of these changes is different. The multinationalization rate decreases since the negative direct effect (squeezing out MNCs) exceeds the positive competition effect from the Southern new varieties. Again, laborers in both regions engage in relatively inefficient activities and the growth rate becomes lower than in the benchmark model for any given Southern set-up cost premium. Finally, this rise in set-up costs widens the wage gap.

Compared to the previous case with Southern innovation only, a significant backward spillover ( $\lambda=2/3$ ) boosts the rate of multinationalization at each given level of the set-up cost premium by the same mechanism as in section 5.1. That is, the positive competition effect on multinationalization of faster expansion of varieties overtakes the negative direct effect from reallocation of labor into R&D, so that the multinationalization rate becomes higher at each given level of the set-up cost premium. Further, since the backward spillover helps restore global efficiency the global growth rate is higher than in the no-spillover case and the wage gap is narrower.

### **5.3 Change in local LBD spillover parameters ( $\mu$ and $\theta$ )**

A larger Northern LBD spillover directly increases innovation efficiency in the benchmark model. In turn, the North invests more in R&D and transfers more of their varieties to the South for production. Labor demand in the South increases and the wage gap shrinks. Finally, the induced increase in Northern innovation efficiency expands the global innovation growth rate.

As before, when compared to the benchmark model, the introduction of Southern innovation only ( $\lambda=0$ ) decreases the rate of multinationalization, causing the North-South wage gap to widen and the global growth rate to drop. Compared to this scenario, the possibility of backward spillover ( $\lambda=2/3$ ) leads to higher rates of multinationalization and growth, as well as a narrower wage gap. Finally, it is possible that the significant backward spillover restores the growth rate faster so that it may reach and surpass the benchmark level when the Northern LBD spillover gets high enough.

Turning to the Southern LBD spillover ( $\theta$ ), it does not exist in the benchmark model so that we only examine the steady-state equilibrium in two scenarios, Southern innovation without and with backward spillover. First, if no backward spillover is permitted, an increase in the Southern LBD parameter directly increases the Southern knowledge accumulation rate. The labor reallocation into Southern R&D, what we have termed the direct effect, lowers the multinationalization rate, whereas the familiar competition effect boosts FDI activities. The prior force dominates and the multinationalization rate decreases as Southern LBD spillover goes up. As a result, the global growth rate decreases while the North-South wage gap increases with an increase in the Southern LBD spillover.

Finally, the possibility of a backward spillover ( $\lambda=2/3$ ) raises the rate of multinationalization as before, while emphasizing the direction of change of key variables in comparison with the previous case with no backward spillover. In particular, the combination of high LBD and the backward spillover concentrates global resources more efficiently. Thus, the growth rate is higher while the wage gap is narrower.

## 6. CONCLUSION

We present a dynamic, general-equilibrium model in which the benchmark case permitted endogenous FDI choice but there is no Southern innovation. In this case the more FDI activities that exist, the greater is the allocation of Southern labor to production and the

greater is the allocation of Northern labor to innovation for any given imitation rate. This outcome represents an efficient allocation of labor in the two regions and generally maximizes the potential for global innovation growth. We find also in the model that as the Southern imitation rate declines there is an increase in multinationalization and higher global innovation. Thus, policy efforts in the South to reduce domestic imitation actually would expand international innovation.

When we next introduce the possibility of endogenous but high-cost Southern innovation a complex set of tradeoffs emerges. A primary result is that the more Southern labor allocated to innovation the slower is global growth because it implies relatively greater specialization by both regions in inefficient activities: the South in innovation and the North in production. In this case, however, there is a non-monotonic relationship between imitation and multinationalization. It is possible for increases in imitation risk (due perhaps to weaker patents) to expand MNC investment through a competition effect.

Finally, a substantial spillover of Southern knowledge into improved Northern innovation implies at least partial reversal of the inefficient specialization. As a result, global innovation growth is intermediate between the no-spillover case and the benchmark case, and may exceed the latter at high rates of imitation. A similar relationship arises for the rate of multinationalization. It is interesting that the combination of endogenous Southern innovation and knowledge spillovers to the North expands both FDI and global innovation at higher rates of imitation. In this sense the learning from South to North helps restore an efficient international resource allocation. It must be stressed, however, that innovation growth rates are highest under any scenario when imitation risk is low.

We emphasize that these results emerge in a complex and stylized model. However, they do highlight a possibility that has not been recognized widely in the literature. Specifically, technology transfer through multinational investment tends to go up in an

environment of lower imitation risk, perhaps due to strengthened intellectual property protection. This multinationalization may kick off a process in the South in which local imitation and learning-by-doing establish the possibility of domestic innovation as the costs of R&D fall. In equilibrium, however, Southern innovation and investment in multinational subsidiaries must pay the same economic return and cover both the innovation costs and the FDI set-up cost. This fact implies that Southern innovation remains high cost relative to its Northern counterpart. As a result, inefficient specialization can reduce the extent of FDI and international knowledge accumulation. To counter this inefficiency a Southern policy of strengthening IPP and reducing the costs of inward investment can expand multinationalization and growth, an effect enhanced by the backward spillover. As noted in Figure 2, global innovation is maximized under weak Southern imitation risk.

Our analysis turns up another novel feature, however. Beyond a certain range, increases in the Southern imitation rate may raise the arrival rate of multinational enterprises due to a competition effect arising from lower-cost Southern innovation and the backward technology spillover. This factor can reverse the impact of inefficient specialization and ultimately increase global innovation growth. In this context, the relationship between growth and patent protection is U-shaped. Thus, in cases where the reverse spillover from South to North is sufficiently strong there may be some innovation benefit from a relaxation in local IPP.



## APPENDIX: PARAMETER VALUES

The backward knowledge spillover from South to North ( $\lambda$ ) may be measured by the geographic pattern of learning. Jaffe, Trajtenberg and Henderson (1993) find that 60-75 percent of knowledge through citations of U.S. patent in the 1970s and 1980s is learned by domestic firms while 25-40 percent by foreign firms. Thus, we take the value of our knowledge spillover parameter to be between  $1/3$  and  $2/3$ .

Another important parameter is the Southern rate of imitation ( $i$ ). We calculate it from two components: the relative strength of IPP and the relative learning ability of the FDI-recipient country. The stronger are patent rights and the lower is the learning ability, the lower would be the imitation rate. The strength of IPP is calculated from the Ginarte-Park (GP) patent index in the year 2000 (Park and Wagh, 2002). The average index in a selection of developing countries was 2.84 while that of developed regions was 4.05. Thus, the strength of IPP in developing regions was about 70 percent of the level in developed regions, suggesting an imitation margin of 30 percent. The learning ability of developing countries relative to developed nations is calculated from data on the education attainment of total population of age 25 and over in Barro and Lee (2000). The average years of schooling in developed nations was 9.4 and that in developing countries was 6.1. Using these data, workers in developing countries have about 65 percent the learning ability of those in developed regions. Multiplying the relative average strength of IPP (0.3) and the relative average learning ability (0.65), developing countries are calibrated to have an imitation rate of 0.2 in the benchmark. Our lower bound for this parameter is 0.0, while we calculate the upper bound as 0.4.

The relative investment barrier in the South ( $I$ ) is calculated from the investment cost index developed by Carr, Markusen and Maskus (2001). The index measures the cost of investing in a country by averaging several indexes of impediments to foreign operations as

reported in the World Competitiveness Report. In our simulations,  $F$  is defined as the percentage difference in the average investment cost index (AIC) in developing countries and that in developed countries. This difference suggested that the average additional investment cost was around 65 percent and we take our benchmark value to be 0.65. The minimum is set to zero and the maximum is set to 1.3, which doubles the benchmark value.

The value of Northern LBD spillover parameter ( $\mu$ ) is taken from the literature. Bahk and Gort (1993) find that when experience was proxied by cumulative output per unit of labor, a one percent change in cumulative output led to a 0.08 percent change in current output for new manufacturing plants. Irwin and Klenow (1994) estimate the LBD coefficient to be 0.2 in the semiconductor industry. Benkard (2000) concludes that if knowledge does not depreciate then the learning rate is roughly 18 percent in the commercial aircraft building industry. The study by Cooper and Johri (2002) presents estimates of coefficients for LBD spillovers (measured by various output-based measures of organizational capital) ranging from 0.22 to 0.38 on the plant level. Therefore, we set our benchmark value of Northern LBD to 0.2 and allow it to change between 0.0 and 0.4.

The LBD spillover in the South ( $\theta$ ) reflects the learning ability of workers from watching local production processes. Recalling that workers in developing countries have about 65 percent of the learning ability of workers in developed countries from the Barro-Lee data, the benchmark value of the LBD spillover in the South is set to be 0.13, which is 65 percent of the benchmark value of the Northern LBD spillover. We permit the Southern parameter to range from 0.0 to 0.2, implying that the South could have no LBD or it could enjoy the same LBD as their Northern counterpart.

The remaining parameters do not have direct policy relevance and we simply fix them at a benchmark value. Based on Broda and Weinstein (2006)'s finding that the mean elasticity of substitution at the SITC 5-digit level is 6.6, the elasticity of substitution between

differentiated varieties ( $\varepsilon$ ) is set to 6.5. The time preference parameter ( $\rho$ ) is set to be 0.02, suggested by Barro and Sala-i-Martin (1995). The global expenditure share of manufacturing goods ( $\Phi$ ) is assumed to equal the value added of industrial goods divided by GDP. From the 2007 World Development Indicator statistics database of the World Bank, the value of this for high and middle income regions is calculated to be 0.3. Finally, if the population in developed regions is normalized to be 1.0, the World Development Indicator would show the population in developing regions to be around 3.0. However, this differential is not sufficient to support innovation, multinational production, and local production in the South in equilibrium. Thus, we raise the benchmark value of Southern population to 12 to permit comparing the benchmark with extended models.

## REFERENCES

- Bahk, B-H and M. Gort, "Decomposing Learning-by-Doing in New Plants," *Journal of Political Economy* 101 (1993), 561–583.
- Baldwin, R. E., H. Braconier and R. Forslid, "Multinationals, Endogenous Growth and Technological Spillovers: Theory and Evidence," *Review of International Economics* 13 (2005), 945-963.
- Baldwin, R. E. and R., Forslid, "Trade Liberalization and Endogenous Growth a Q-Theory Approach," *Journal of International Economics* 50 (2000), 497-517.
- Barro, R.J. and J-W Lee, "International Data on Educational Attainment: Updates and Implications," CID Working Paper No. 42, Center for International Development at Harvard University, 2000.
- Barro, R.J. and X. Sala-i-Martin, *Economic Growth* (New York: McGraw-Hill pressing, 2000).
- Benkard, L., "The Dynamics of Aircraft Production," *American Economic Review* 90 (2000), 1034-1054.
- Broda, C. and D. E. , Weinstein, "Globalization and the Gains From Variety," *Quarterly Journal of Economics* 121 (2006), 541-585.
- Carr, D.L., J.R. Markusen and K.E. Maskus, "Estimating the Knowledge-Capital Model of the Multinational Enterprise," *American Economic Review* 91 (2001), 693-708.
- Cooper, R. and A. Johri, "Learning-by-Doing and Aggregate Fluctuations," *Journal of Monetary Economics* 49 (2002), 1539-1566.
- Glass, A. J. and K. Saggi, "Intellectual Property Rights and Foreign Direct Investment," *Journal of International Economics* 56 (2002), 387-410.
- Grossman, G. M. and E. Helpman, *Innovation and Growth in the Global Economy* (London: MIT press, 1991a).

- Grossman, G. M. and E. Helpman, "Trade Knowledge Spillovers, and Growth," *European Economic Review* 35 (1991b), 517-526.
- Helpman, E., "Innovation, Imitation, and Intellectual Property Rights," *Econometrica* 61 (1993), 1247-1280.
- Irwin, D.A. and P.J. Klenow, "Learning-by-Doing Spillovers in the Semiconductor Industry," *Journal of Political Economy* 102 (1994), 1200-1227.
- Jaffe, A. B., M. Trajtenberg and R. Henderson, "Geographic Localization of Knowledge Spillovers as Evidenced by Patent Citations," *Quarterly Journal of Economics* 108 (1993), 577-598.
- Keller, W., "Are International R&D Spillovers Trade-Related? Analyzing Spillovers among Randomly Matched Trade Partner," *European Economic Review* 42 (1998), 1469-1481.
- Keller, W., "Geographic Localization of International Technology Diffusion," *American Economic Review* 92 (2002), 120-142.
- Keller, W. and S. R. Yeaple, "Multinational Enterprises, International Trade, and Technology Diffusion: a Firm-Level Analysis of the Productivity Effects of Foreign Competition in the United States," *Review of Economics and Statistics* (forthcoming 2009).
- Lai, E. L.-C., "International Intellectual Property Rights Protection and the Rate of Product Innovation," *Journal of Development Economics* 55 (1998), 133-153.
- Linden, G., "Optical Storage in China: a Study in Strategic Industrial Policy," ISIC Report 2003-01, the Information Storage Industry Center, Graduate School of International Relations and Pacific Studies, University of California, 2003.
- Organization of Economic Co-operation and Development, *OECD Science, Technology and Industry Outlook* (OECD Publishing, 2005).

- Park, W.G., "Intellectual Property Rights and International Innovation," in K.E. Maskus, editor, *Intellectual Property, Growth and Trade: Frontiers of Economics and Globalization* (Amsterdam: Elsevier-North Holland, 2008)
- Park, W.G. and S. Wagh, "Index of Patent Rights," *Economic Freedom of the World: 2002 Annual Report* Chapter 2 (2002), 33-41.
- Sjoholom, F., "International Transfer of Knowledge: the Role of International Trade and Geographic Proximity," *Weltwirtschaftliches Archiv* 132 (1996), 97-115.
- Tobin, J., "A General Equilibrium Approach to Monetary Theory," *Journal of Money, Credit and Banking* 1 (1969), 15-29.
- World Bank, *World Development Indicator* (World Bank, 2007).
- World Intellectual Property Organization, *WIPO Patent Report: Statistics on Worldwide Patent Activity* (WIPO, 2007)
- Xu, J.-L., "Analyzing China's Patent Strategies," *Guangming Daily*, Guangming Daily Pressing, Beijing (2006-02-16).

## TABLES AND FIGURES

Table 1 Parameter values for simulation

	Benchmark	Low	High
Backward spillover ( $\lambda$ )	-	1/3	2/3
Southern imitation ( $i$ )	0.2	0	0.4
Relative investment cost ( $\Gamma$ )	0.65	0	1.3
Northern LBD ( $\mu$ )	0.2	0	0.4
Southern LBD ( $\theta$ )	0.13	0	0.2
Time preference ( $\rho$ )	0.02	-	-
Elasticity of substitution ( $\varepsilon$ )	6.5	-	-
Consumption share of differentiated goods ( $\Phi$ )	0.3	-	-
Northern labor	1	-	-
Southern labor	12	-	-

Figure 1 Southern imitation rate and the rate of multinationalization

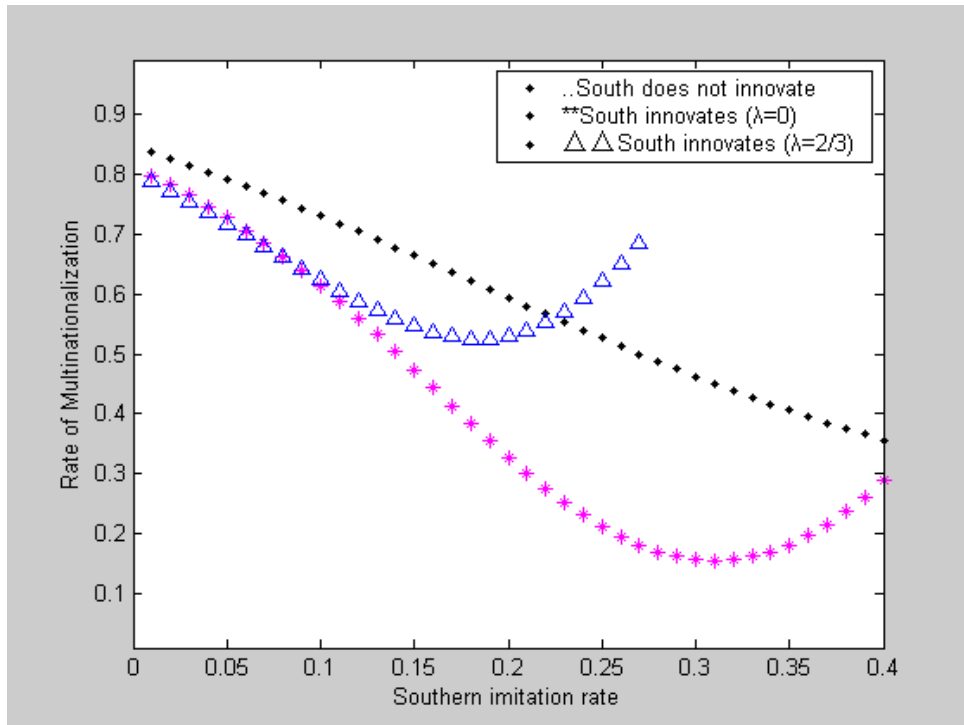


Figure 2 Southern imitation rate and growth

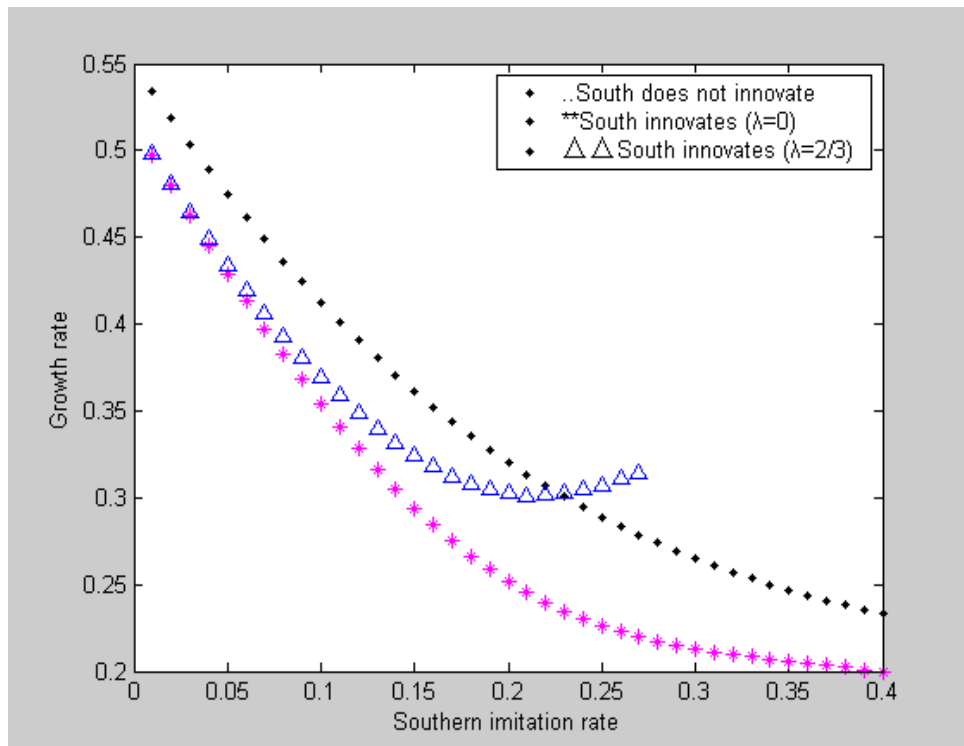




Figure 3 Southern imitation rate and North-South wage ratio

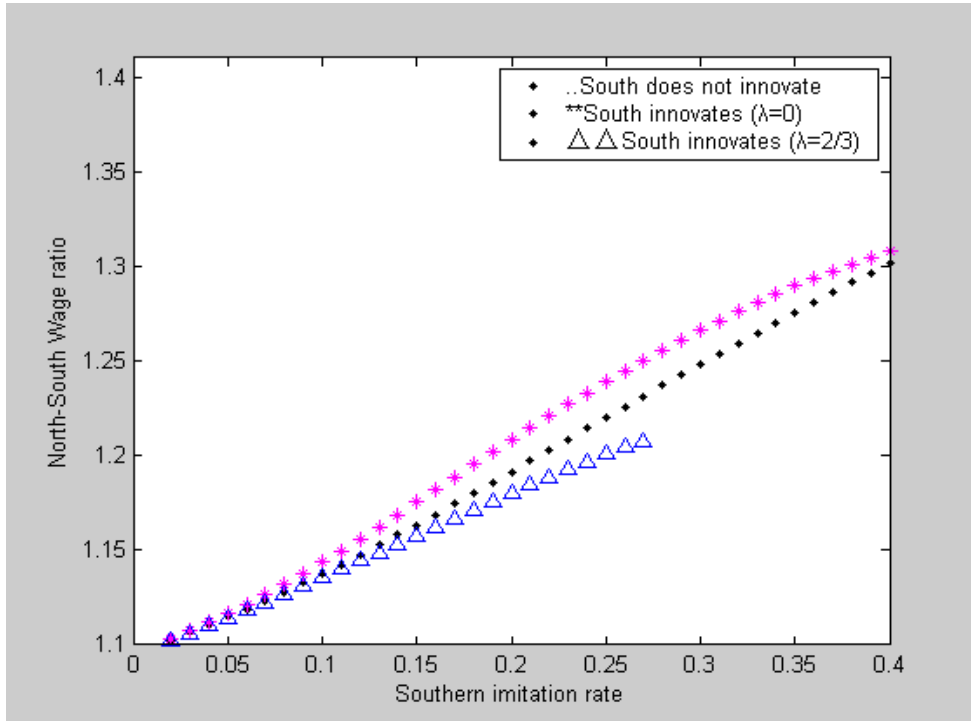


Figure 4 Southern imitation rate and Southern R&D investment

